



momo  
handles

# Welcome to Momo.

Expect grand designs and exquisite ranges.

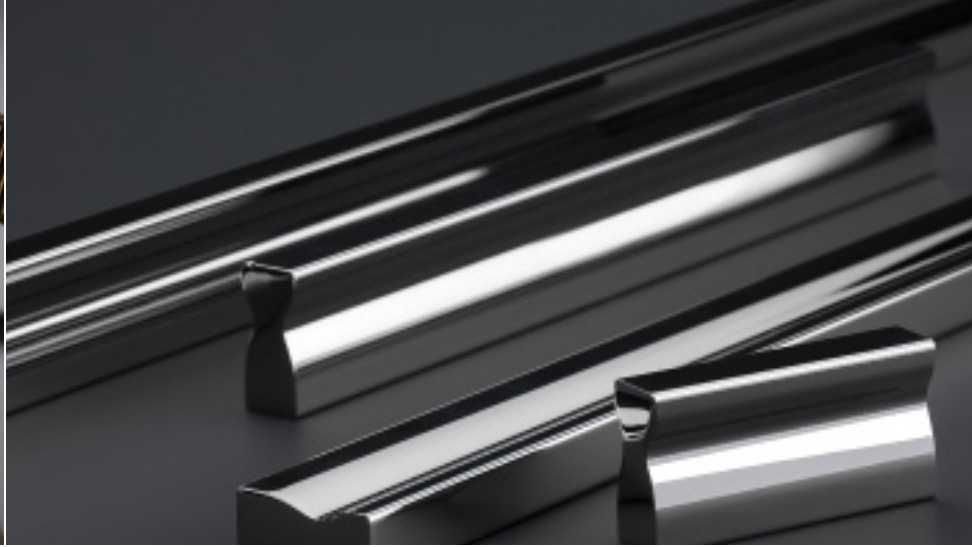
Look, Feel and Functionality are intrinsic to the Momo brand. Designed with luxury in mind, this catalogue brings to life our meticulously selected collections of cabinet handles. Featuring only the finest designs and materials.

Momo partners with industry leading design experts, bringing the Momo vision to the fore-front. Creating luxury designs and one of a kind collections made to exacting standards by using a variety of traditional methods and materials.

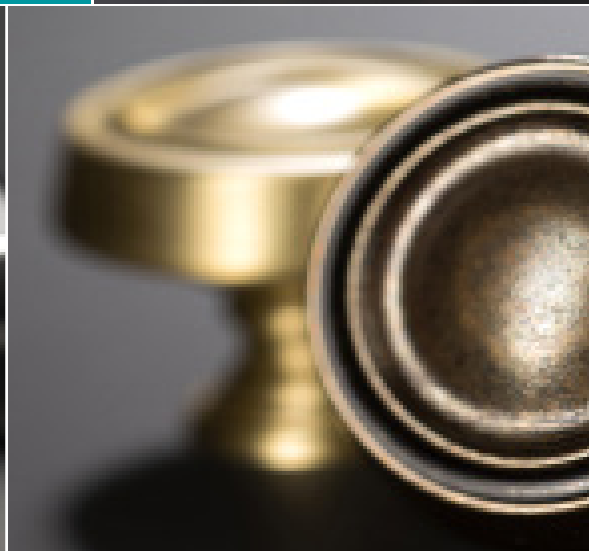
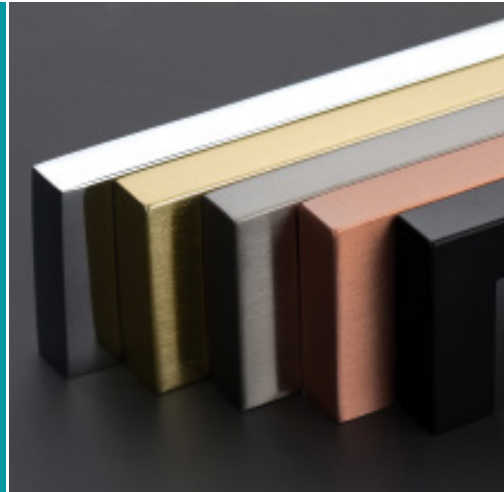
Throughout this catalogue you will explore our Traditional, Transitional, Contemporary, and Pewter ranges. Each selected to provide a range of exciting design options whatever your application.

Our vision is to bring cabinet handles to life and make our elegant designs available to everyone.





The pinnacle of  
craftsmanship,  
creativity and  
design.



# Contents Page

## Traditional

Hampton	10
Trafalgar	12
Charlbury	14
Hebe	16
Jago	18
Finsbury	20
Ilsa	76
Odessa	72
Hugo	76

## Handleless

Gola	78
------	----

## Symbol Key

< > Overall Length

^ Overall Height



Projection



Diameter



Centre Holes

## Transitional

Barrington	24
Pembrey	28
Ambrose	30
Otto	32
Kellas	34
Aubyn	36
Reba	38
Lumi	40
Lago	42
Casper	44
Songo	45
Hanbury	45
Armado	46
Rollo	46
Ivo	73

## Pewter Range

Dome	48
Fossey	48
Eclipse	49
Sheraton	49
Lumley	49
Quebec	50

## Statement Knobs

Cosmo	72
Isla	72
Odessa	72
Coco	72
Ivo	73
Chelsea	74
Kew	74
Portobello	74
Evora	76
Verity	76
Ilsa	76
Hugo	76

## Contemporary

Jura	54
Campana	56
Lincoln	58
Coleby	60
Enzo	62
Milano	64
Pimlico	66
Burford	66
Malvern	66
Torksey	66
Lunun	67
Warwick	67
Mercury	67
Linus	67
Fern	68
Marco	68
Welton	68
Clova	68
Orla	69
Nuri	69
Nico	69
Kingsbury	69

## Finish Key

AB	Antique Bronze	BA	Brushed Anodised	MBL	Matt Black	SN	Satin Nickel
AC	Antique Copper	BRO	Bronze	MBC	Matt Brushed Copper	SC	Satin Chrome
AT	Antique Tin	BN	Brushed Nickel	NP	Natural Pewter	SCO	Satin Copper
AP	Antique Pewter	CP	Chrome Plated	PN	Polished Nickel		
BSB	Brushed Satin Brass	DN	Dull Nickel	SB	Satin Brass		

When ordering please combine 'Part No.' and 'Finish' to get your full product code.

E & O Excepted - Catalogue 1.1

# Icon Key & Descriptions



Exquisite designs, most unique to Momo, meticulously crafted to the highest standards.



Featuring our 'Lifetime Guarantee' giving you full peace of mind, we believe in the quality of our product.



Includes fixtures and fittings.



Made in the UK.

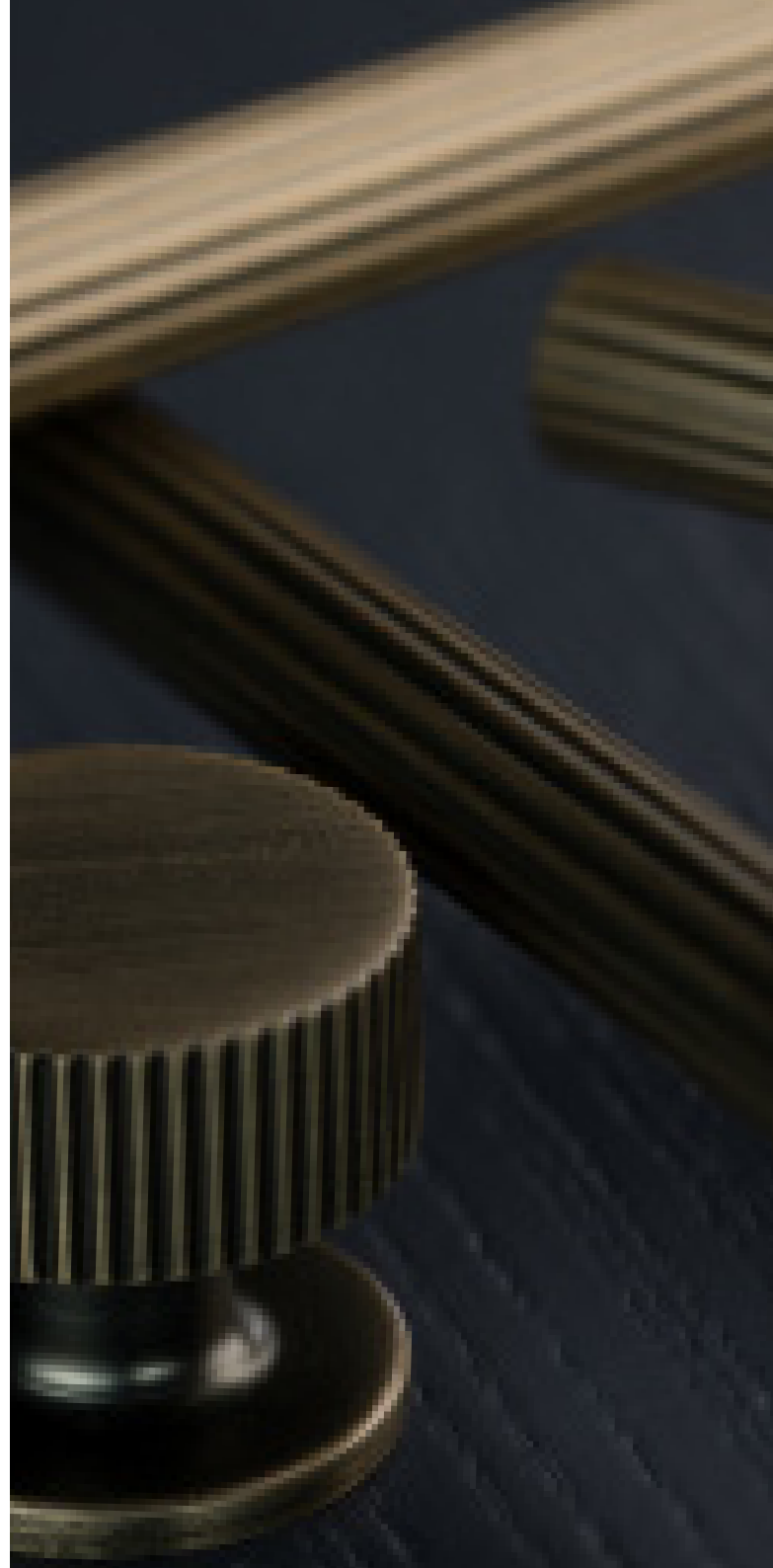


Indicates the manufacturing material used.

A = Aluminium  
B = Brass  
NP = Pewter  
S = Steel  
SS = Stainless Steel  
SZ = Steel/Zamak  
Z = Zamak



Designed in-house or sourced exclusively for Momo. You won't find these authentic designs anywhere else.





A black and white photograph of a computer workstation. The image features a keyboard with a prominent grid-like texture, a mouse, and a mousepad, all with similar textured surfaces. The lighting is dramatic, creating strong highlights and deep shadows. The word "Welcome." is centered in the middle of the image in a clean, white, sans-serif font.

Welcome.





Featuring Hampton



# Traditional

*Hampton*  
*Trafalgar*  
*Charlbury*  
*Hebe*  
*Jago*  
*Finsbury*



Finsbury



Trafalgar



Hampton



# Hampton

Knob | Cup



A modern classic, precisely designed with a slight twist, consisting of both a 96mm and 160mm cup. Smooth, soft lines paired with a one-piece matching cabinet knob.

Offered in five stunning finishes. Elegant polished nickel, moody matt black, luxurious bronze, popular dull nickel, and exquisite brushed satin brass.



(PN)



(MBL)



(DN)



(BSB)



(BRO)





*Polished Nickel (PN)*



Part No.	Finish	Type	oo	<>	Ø	l->	Box Qty
GHAK032	PN, MBL, BRO, DN, BSB	Knob	-	-	32	40	25
GHAC096	PN, MBL, BRO, DN, BSB,	Cup	96	123	-	36	25
GHAC160	PN, BRO, BSB	Cup	160	188	-	40	25

*Antique Pewter  
(AP)*



*Bronze  
(BRO)*



*Polished Nickel  
(PN)*



Part No.	Finish	Type	oo	<>	Ø	l->	Box Qty
GTRC064	AP, BRO, PN	Cup	64	102	-	27	25
GTRK038	AP, BRO, PN	Knob	-	-	38	37	25
GTRB096	AP, BRO, PN	Bow	96	150	-	25	25



# Trafalgar

Bow | Cup | Knob



A timeless classic, reinvented. Featuring sophisticated curves and exquisite finishes. This is an essential collection with generous design proportions, manufactured with meticulous care and attention to fine detail.



momo



[momohandles.co.uk](https://www.momohandles.co.uk)

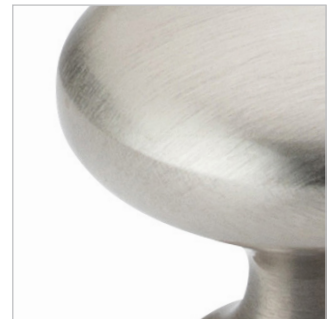
# Charlbury

Cup | Knob



An established all-time favourite. This cup will flush fit onto the cabinet for ease of fitting.

Paired with a delicate cabinet knob for understated appeal. The perfect accompaniment for a wide range of furniture designs.





*Chrome Plated (CP)*



*Brushed Nickel (BN)*

Part No.	Finish	Type	oo	<>	Ø	->	Box Qty
GCHC076	CP, BN	Cup	76	106	-	30	25
GCHK030	CP, BN	Knob	-	-	30	27	50



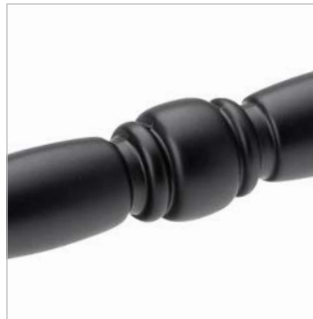


# Hebe

Bar | Knob



Concentric detailing makes this gem of a duo sit happily on a shaker or slab door. Offered in three distinctive finishes.





*Matt Black (MBL)*



*Antique Brass (AB)*



*Antique Copper (AC)*



Part No.	Finish	Type	oo	<>	Ø	->	Box Qty
GHEB128	MBL, AB, AC	Bar	128	144	-	32	25
GHEK031	MBL, AB, AC	Knob	-	-	31	22	50



*Antique Pewter (AP)*



*Chrome Plated (CP)*



*Brushed Satin Brass (BSB)*



*Antique Brass (AB)*

Part No.	Finish	oo	<>	^	->	Box Qty
GJAD160	AP, CP, BSB, AB	160	175	-	33	25

# Jago

D Handle



With soft undulating lines, this graceful handle will complement a range of furniture styles and design schemes seamlessly.

Sometimes, just one handle is all it takes.



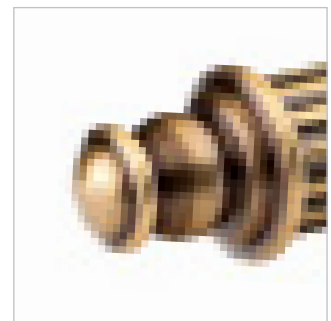
# Finsbury

Bar | Knob



Made from the finest grade solid brass. This majestic collection is designed to captivate. Featuring a detailed linear bar, finial ends and fluted posts. The combination of a gold hue and brown patina creates an opulent antique brass finish.

Perfect for kitchens and bedrooms, notably with the 448mm longer length pull.





*Antique Brass (AB)*

Part No.	Finish	Type	oo	< >	Ø	->	Box Qty
GFIB078	AB	T Knob	-	78	14	40	25
GFIB160	AB	Bar	160	238	14	40	25
GFIB448	AB	Bar	448	526	14	40	10





Featuring Kellas



# Transitional

*Barrington*

*Pembrey*

*Ambrose*

*Otto*

*Kellas*

*Aubyn*

*Reba*

*Lumi*

*Lago*

*Casper*

*Armado*

*Songo*

*Rollo*

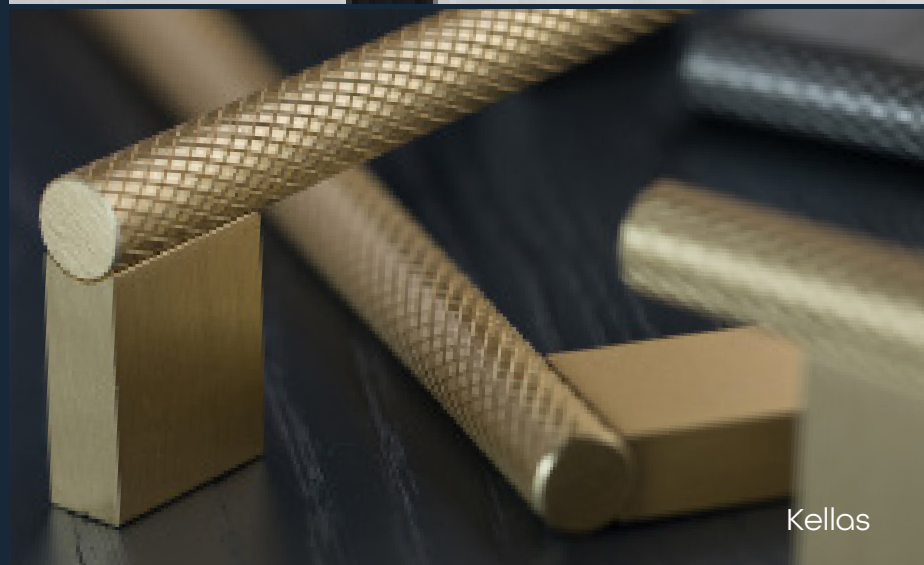
*Hanbury*



Pembrey



Otto



Kellas



# Barrington

Backplates | Cup | Knob | Pull



Designed in-house and exclusive to Momo. This signature collection, features a stunning ribbed texture, taking elements of inspiration from Art Deco design.

With its bold industrial flair and fine details, this range is a real showstopper.



*Polished Nickel (PN)*



*Matt Black (MBL)*



*Brushed Satin Brass  
(BSB)*



*Bronze (BRO)*



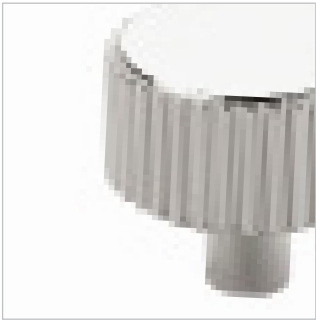
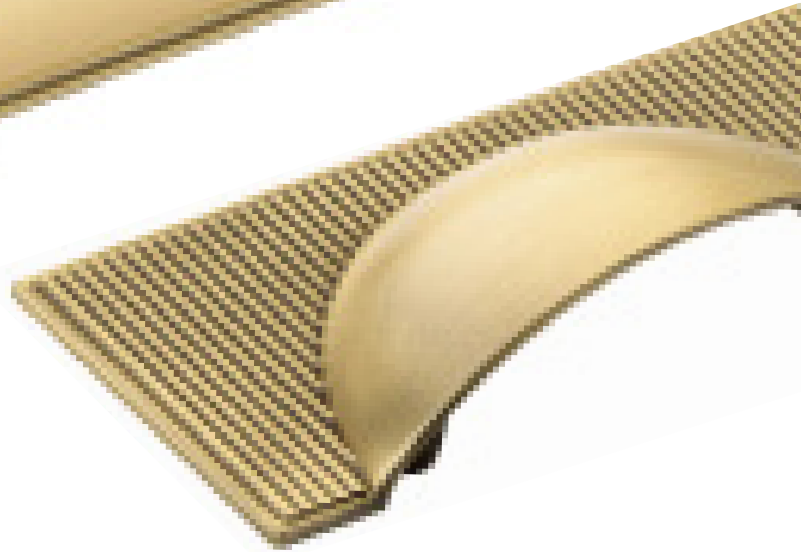
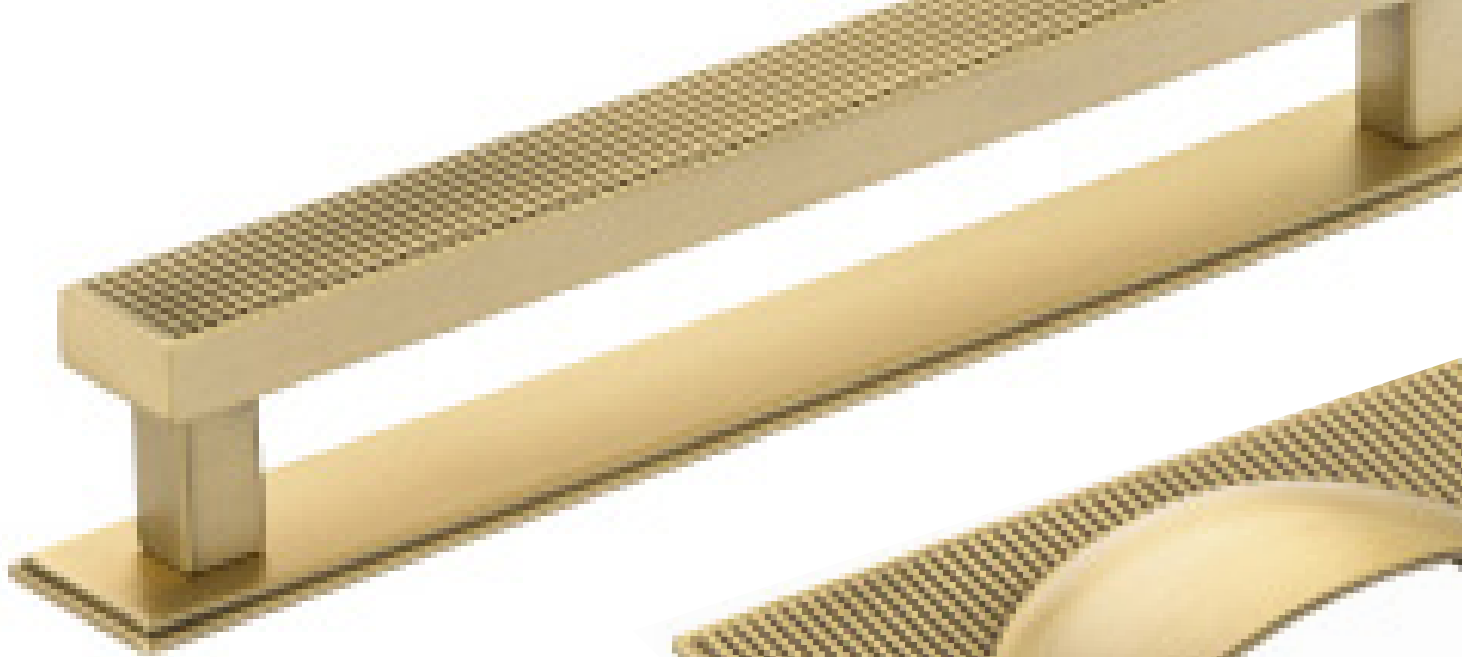


## VERSATILITY

As individual as you are - Mix and match from four luxury finishes and create your own masterpiece.

Take inspiration from some of our favourite combinations below and make a unique statement.





\* Please note knob & pull work individually or with a backplate (BP)

Part No.	Finish	Type	∞	<>	∅	->	Box Qty
GBAC064	NP, BRO, BSB, MBL	Cup	64	105	-	33	25
GBAK032	NP, BRO, BSB, MBL	Knob	-	-	32	-	25
GBABP100	NP, BRO, BSB, MBL	Knob B/P	-	100	-	25	25
GBAP160	NP, BRO, BSB, MBL	Pull	160	180	-	60	25
GBABP160	NP, BRO, BSB, MBL	Pull B/P	-	190	-	25	25



# Pembrey

Bar | Knob



Exclusively designed by our in-house Momo designers, this timeless collection adapts easily to a traditional or modern style, seamlessly perfect on modern slab or shaker door applications.

Choose from three marvellous finishes, Bronze, Matt Black and lavish Polished Nickel.



*Bronze (BRO)*



*Polished Nickel (PN)*



*Matt Black (MBL)*



Polished Nickel (PN)



Part No.	Finish	Type	oo	< >	Ø	l->	Box Qty
GPEK082	PN, BRO, MBL	T Knob	-	82	13	37	25
GPEB128	PN, BRO, MBL	Bar	128	210	13	37	10
GPEB320	PN, BRO, MBL	Bar	320	402	13	37	25





*Antique Bronze Matt  
(ABM)*

*Cosmo Knob*

Part No.	Finish	Type	oo	<>	Ø	->	Box Qty
GAMK060	ABM	Knob	-	60	24	36	25
GAMB160	ABM	Bar	160	196	24	36	25
GAMB224	ABM	Bar	224	260	24	36	25
GCOK032	ABM	Knob	-	32	32	30	25

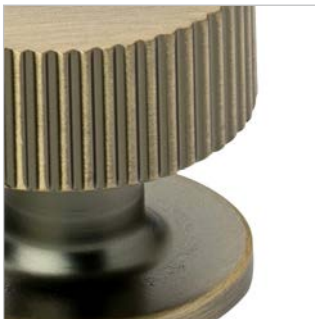
# Ambrose

Bar | Knob



Inspired by the contemporary bar and clasp design, the juxtaposition of the circular bar with accentuated grooves and rectangular posts, makes this an attractive all-round statement collection.

Consider using the Cosmo knob to enhance your fitting options.





# Otto

Bar | Cup | Knob



With its distinct blend of contemporary and traditional styling, this is the perfect transitional trio for any door.

The perfect choice for those looking for versatile styling options. A touch of urban influence gives this design a unique edge.



*Brushed Satin Brass (BSB)*



*Matt Black (MBL)*



*Antique Brass (AB)*



Part No.	Finish	Type	oo	< >	Ø	l->	Box Qty
GOTK028	BSB, AB, MBL	Knob	-	28	28	24	25
GOTC096	BSB, AB, MBL	Cup	96	113	-	22	50
GOTD160	BSB, AB, MBL	D Handle	160	175	-	29	50



# Kellas

Bar | Knob



This modern classic achieves a perfect balance of design and functionality.

A versatile handle perfectly practical for a wide range of design applications. The knurled texture adds further interest and a tactile feel.



*Matt Black (MBL)*



*Brushed Anodised (BA)*



*Satin Brass (BSB)*



*Matt Block (MBL)*



Part No.	Finish	Type	oo	< >	^	->	Box Qty
GKEK060	MBL, BA, SB	Knob	-	60	-	33	25
GKEB160	MBL, BA, SB	Bar	160	182	-	33	10
GKEB256	SB, MBL	Bar	256	264	-	33	25
GKEB768	SB, MBL	Bar	384 x 2	776	-	33	10





# Aubyn

Pull | Knob



This striking collection combines a beautifully faceted knob with clean concave lines on the bar handle to deliver the perfect finishing touch to your application.

Finishes of Bronze, Brushed Satin Brass and Polished Nickel are available.





*Bronze (BRO)*



*Polished Nickel (PN)*



*Brushed Satin Brass (BSB)*

Part No.	Finish	Type	oo	<>	Ø	l->	Box Qty
GAUK035	PN, BRO, BSB	Knob	-	35	35	29	25
GAUP160	PN, BRO, BSB	Pull	160	216	-	38	25

# Reba

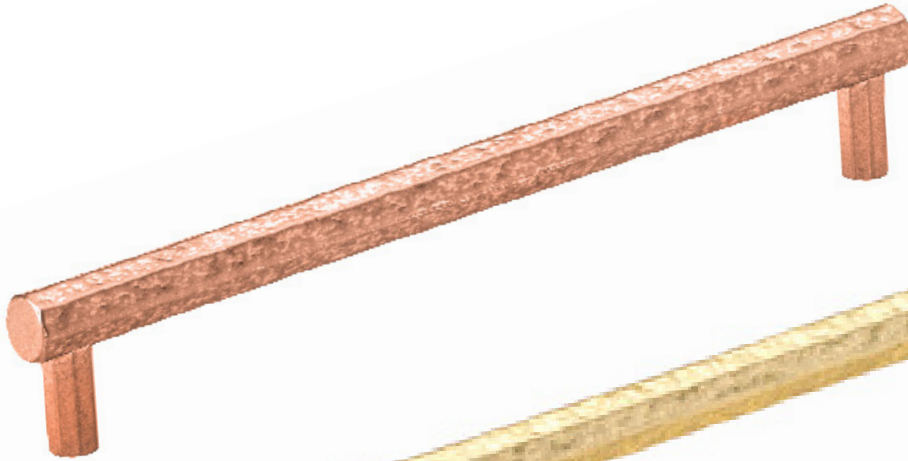
Bar Handle



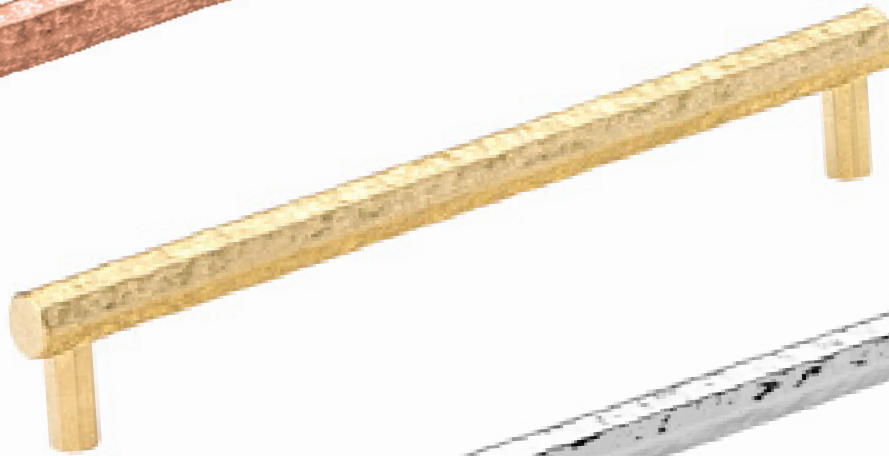
Inspired by the power of nature's elements, this textured piece is wonderfully tactile, available in three exquisite finishes.

Perfectly suited for contemporary furniture applications.

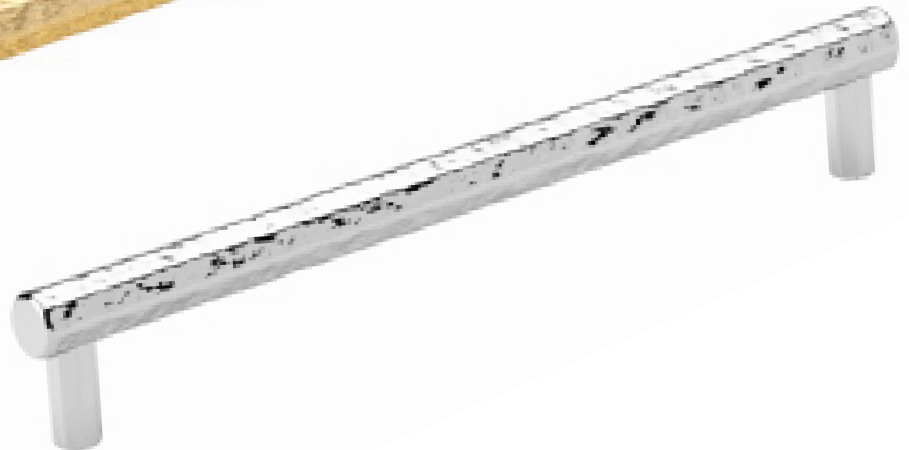




*Satin Copper (SCO)*



*Satin Brass (SB)*



*Polished Nickel (PN)*

Part No.	Finish	oo	<>	^	->	Box Qty
GREB192	PN, SCO, SB	192	211	14	40	25



# Lumi

D Handle



A sleek duo with linear detailing, this collection personifies transitional. Clean lines, sleek profiles and a modern aesthetic, whilst still embracing traditional details that always impress.





*Brushed Satin Brass  
(BSB)*



*Antique Pewter (AP)*



*Antique Brass (AB)*

Part No.	Finish	oo	< >	^	->	Box Qty
GLUD320	AB, BSB, AP	320	334	14	33	25
GLUD160	AB, BSB, AP	160	174	14	33	25





# Lago

Pull Handle



With a hint of retro influencing, this handle is a show-stopper.

With its intriguing shape and three luxury finishes giving this design a unique flair, perfect for those one-off statement pieces.





*Satin Brass (SB)*



*Matt Black (MBL)*



*Chrome Plated (CP)*

Part No.	Finish	∞	<>	^	>	Box Qty
GLAP032	SB, MBL, CP	32	65	56	28	25





# Casper

Bar | Knob



Luxury, redefined. The soft triangular curved bar gives this range a unique shape and timeless feel as it merges with the delicate up and over clasp from the foot.



*Polished Nickel (PN)*

Part No.	Finish	Type	oo	<>	^	l->	Box Qty
GCAK060	PN	Knob	-	60	19	37	25
GCAB128	PN	Bar	128	168	19	37	25
GCAK192	PN	Bar	192	232	19	37	25



*Satin Nickel (SN)*



*Antique Copper (AC)*

## Rollo



Part No.	Finish	oo	< >	^	->	Box Qty
GROB128	SN, AC	128	146	12	24	30



*Antique Tin (AT)*



*Chrome Plated (CP)*



*Matt Black (MBL)*

## Armado



Part No.	Finish	oo	< >	^	->	Box Qty
GARD160	AT, CP, MBL	160	179	6	35	25



Featuring Coleby

# Contemporary

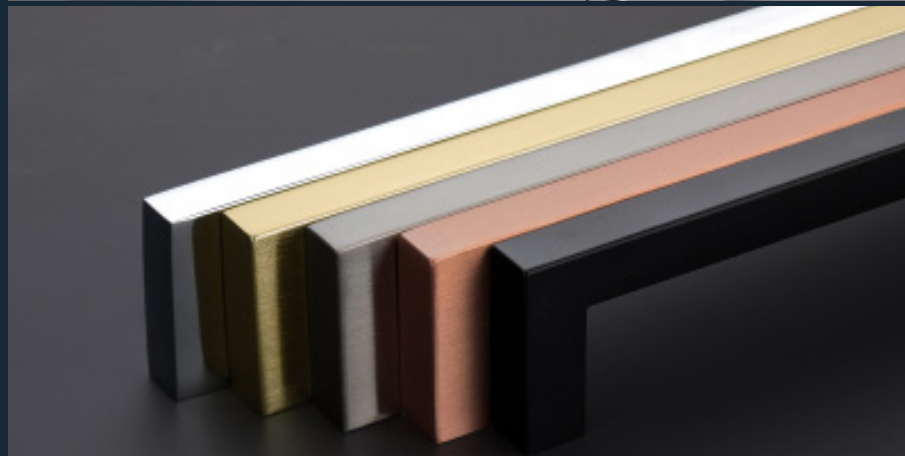
- Jura*
- Campana*
- Lincoln*
- Coleby*
- Enzo*
- Milano*
- Pimlico*
- Burford*
- Malvern*
- Torksey*
- Lunun*
- Warwick*
- Mercury*
- Linus*
- Fern*
- Marco*
- Welton*
- Clava*
- Orla*
- Nuri*
- Nico*
- Kingsbury*



Campana



Lincoln



Milano





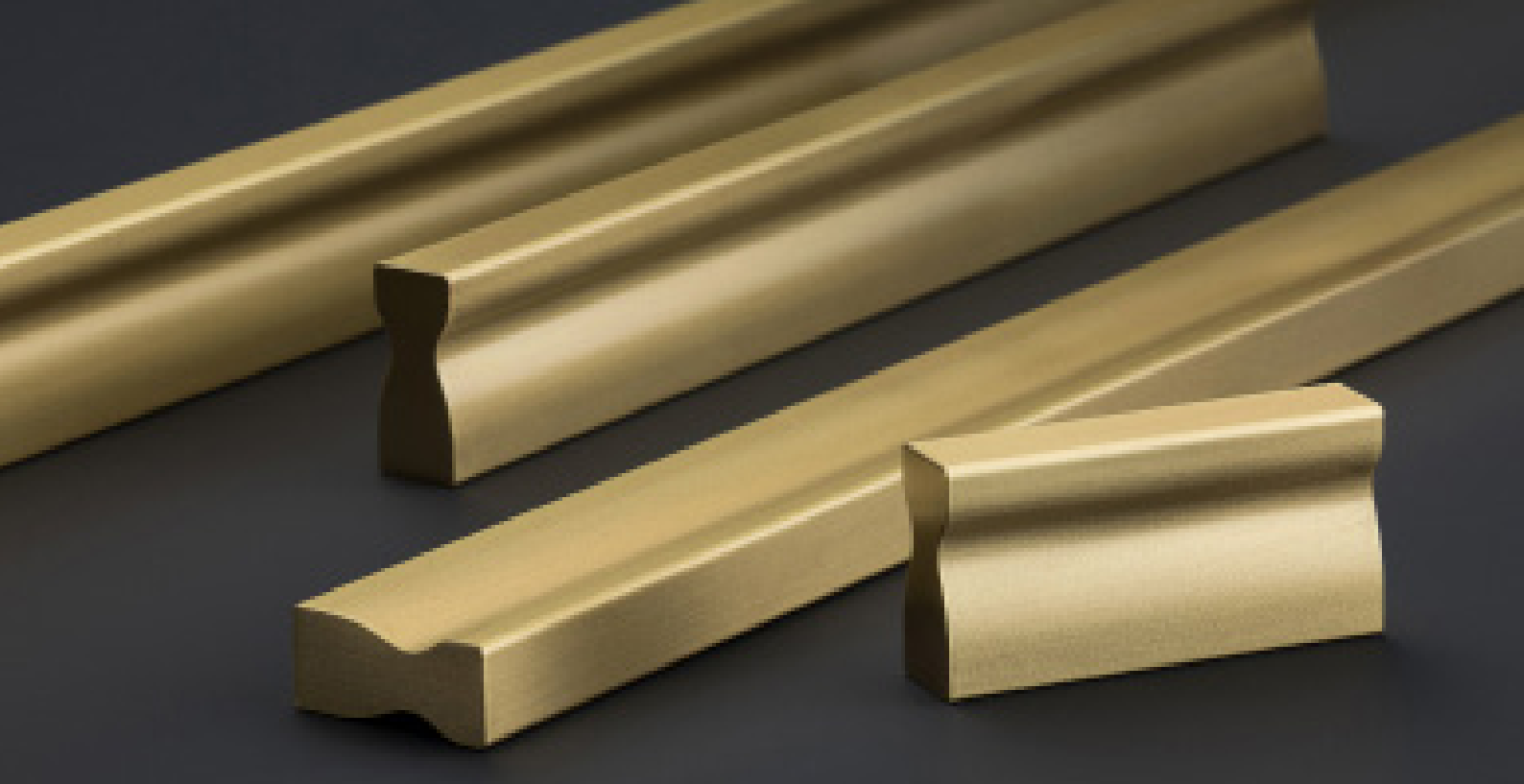
# Jura

Profile



A modest yet sophisticated collection. Understated with its ridded indent design feature to add that unique finishing touch and make this piece truly functional.

Available in four lengths and in brushed satin brass and polished nickel from 32mm to 608mm.



*Brushed Satin Brass (BSB)*



*Polished Nickel (PN)*

Part No.	Finish	oo	<>	^	->	Box Qty
GJUP032	PN, BSB	-	32	-	23	25
GJUP160	PN, BSB	160	174	-	23	25
GJUP320	PN, BSB	320	334	-	23	25
GJUP608	PN, BSB	608	622	-	23	25





# Campana

D Handle



An attractive suite of three pull handles with design detail on the inside and outside of the handle ends. Angular and exciting.





*Satin Brass (SB)*



*Chrome Plated (CP)*



*Matt Black (MBL)*

Part No.	Finish	oo	< >	^	->	Box Qty
GCAD160	SB, CP, MBL	160	178	8	28	25
GCAD192	SB, CP, MBL	192	210	8	28	25
GCAD320	SB, CP, MBL	320	338	8	28	25



Featuring Lincoln

# Lincoln

Profile



Perfectly minimalist, wrap around profile handle, perfect for a range of applications and offered in three stunning finishes.

*Matt Black (MBL)*



*Brushed Satin Brass (BSB)*



*Brushed Nickel (BN)*



Part No.	Finish	Type	oo	<>	^	->	Box Qty
GLIP128	BN, BSB, MBL	Profile	128	200	-	43	30
GLIP192	BN, BSB, MBL	Profile	192	250	-	43	10
GLIP768	BN, BSB, MBL	Profile	384 x 2	800	-	43	50

*Brushed Nickel (BN)*



*Matt Black (MBL)*



*Brushed Satin Brass (BSB)*



*Antique Copper (AC)*



Part No.	Finish	oo	< >	Ø	l->	Box Qty
GCOB096	BN	96	136	12	32	10
GCOB128	BN	128	168	12	32	10
GCOB160	BN, MBL, BSB, AC	160	230	12	32	10
GCOB256	BN	256	326	12	32	10



# Coleby



Bar

This modern classic just keeps on giving with the new finish additions. Introducing antique copper with its beautiful embellishments to add interest. The bold circular design and sleek clean lines are a trademark of the Coleby collection.







featuring Enzo



*Chrome Plated (CP)*



*Matt Black (MBL)*

## Enzo

D Handle



A sophisticated two-piece collection in two contrasting finishes, bright chrome plating and smooth matt black, perfect for adding those finishing touches to your interior space.

Part No.	Finish	oo	< >	^	->	Box Qty
GEND160	CP, MBL	160	177	12	30	10
GEND320	CP, MBL	320	369	12	30	10



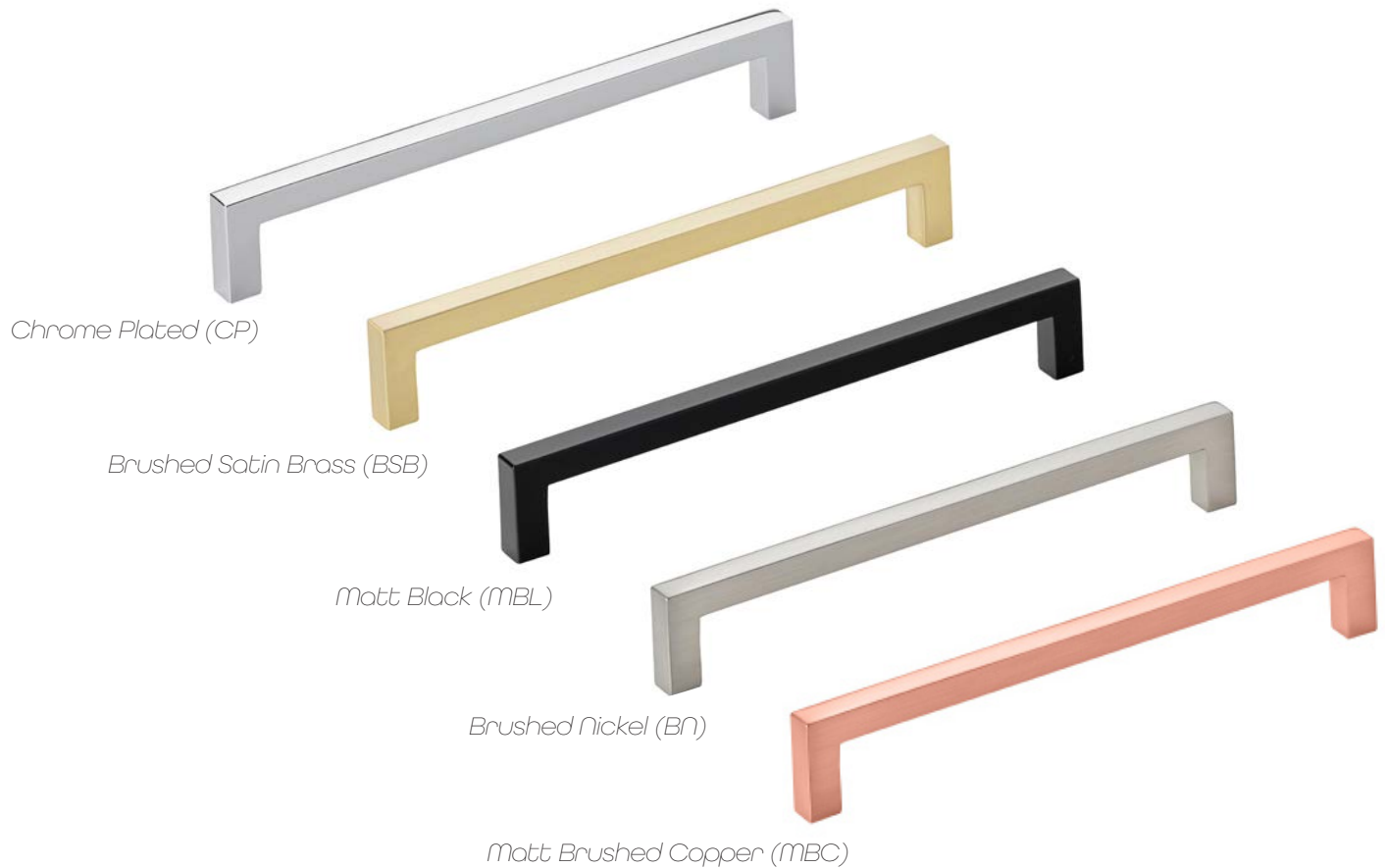
# Milano

D Handle



Perfect simplicity, 90 degree angles in a range of modern finishes.





Part No.	Finish	oo	< >	^	->	Box Qty
GMID160	CP, BSB, MBL, BN, MBC	160	168	9	28	20
GMIB280	MBC, BSB, MBL	280	288	9	28	10
GMIB320	CP, BSB	320	329	9	28	10



Satin Nickel (SN)

Satin Chrome (SC)

## Pimlico



Part No.	Finish	oo	<>	^	->	Box Qty
GPII096	SC, SN	96	110	56	18	50



## Burford



Part No.	Finish	oo	<>	^	->	Box Qty
GBUB160	BN	160	188	14	36	10
GBUB192	BN	192	220	14	36	10



## Malvern



Part No.	Finish	oo	<>	^	->	Box Qty
GMAB128	BN	128	168	19	27	25
GMAB160	BN	160	206	19	29	25



## Torksey



Part No.	Finish	oo	<>	^	->	Box Qty
GTOD160	BN	160	178	11	35	20



### Lunun



Part No.	Finish	oo	< >	^	->	Box Qty
GLUB160	BN	160	200	14	33	10



### Warwick



Part No.	Finish	oo	< >	^	->	Box Qty
CWAB128	BN, CP	128	165	10	25	10



### Mercury



Part No.	Finish	oo	< >	^	->	Box Qty
GMED192	BN	192	206	24	30	25



### Linus



Part No.	Finish	oo	< >	^	->	Box Qty
CLIP160	SN	160	196	18	12	25





## Fern



Part No.	Finish	oo	< >	^	->	Box Qty
GFED160	BN	160	172	20	22	30



## Marco



Part No.	Finish	oo	< >	^	->	Box Qty
CMAD160	BN	160	180	20	25	50



## Welton



Part No.	Finish	oo	< >	^	->	Box Qty
CWED160	CP	160	169	22	28	30



## Clova



Part No.	Finish	oo	< >	^	->	Box Qty
GCLB160	BN	160	193	10	27	20



Orla



Part No.	Finish	oo	<>	^	->	Box Qty
GORP160	PN	160	247	26	22	25



Nuri



Part No.	Finish	oo	<>	Ø	->	Box Qty
CNUB288	CP	288	332	10	30	20



Nico



Part No.	Finish	oo	<>	Ø	->	Box Qty
GNID192	CP	192	201	10	35	20



Kingsbury



Part No.	Finish	oo	<>	^	->	Box Qty
GKID096	BN	96	106	-	35	20



## Brass is back.

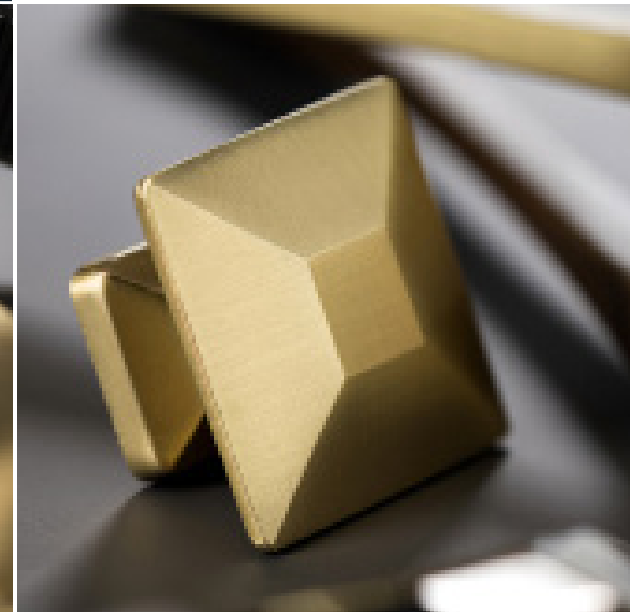
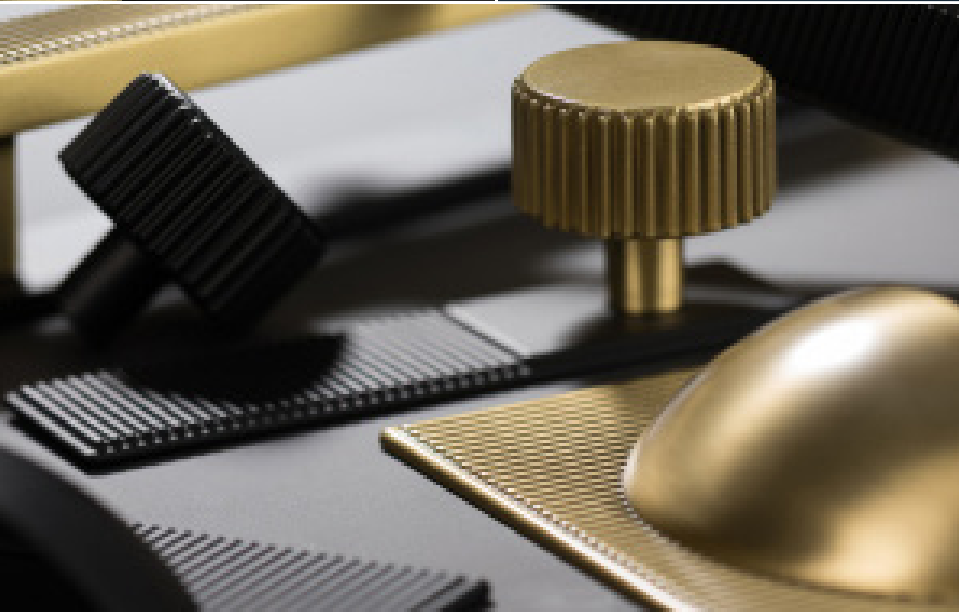
With a fresh, modern feel, Satin Brass has the warmth of real polished brass whilst Brushed Satin Brass has the addition of delicate and deliberate brush marks.

Brass stands out for the right reasons. It sits perfectly on a range of colour palettes - navy, white, green, grey, you name it, it just works!

Make a subtle statement, bold yet classy.



Beautifully made to  
exacting standards.



# Statement Knobs

*Cosmo*

*Ilsa*

*Odessa*

*Coco*

*Ivo*

*Chelsea*

*Kew*

*Portobello*

*Verity*

*Isla*

*Evora*

*Hugo*

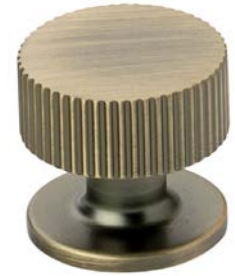




## Cosmo



*Polished Nickel (PN)*



*Antique Bronze Matt (ABM)*

## Ilsa



*Polished Nickel (PN)*



*Brushed Satin Brass (BSB)*

## Odessa



*Polished Nickel (PN)*



*Brushed Satin Brass (BSB)*

## Coco



*Chrome Plated (CP)*



*Brushed Nickel (BN)*

Part No.	Name	Finish	oo	<>	∅	->	Box Qty
GCOK032	Cosmo	PN, ABM	-	-	32	30	25
GILK038	Ilsa	PN, BSB	-	-	38	45	25
GODK038	Odessa	PN, BSB	-	-	38	34	25
GCOK038	Coco	CP, BN	-	-	38	25	25



# Ivo



Knob

When all you need is that grand, statement piece – bold, but elegant. Add the perfect finishing touch with Ivo.

Offered in three rich finishes to choose from, Bronze, Polished Nickel and the Brushed Satin Brass.



*Polished Nickel (PN)*



*Bronze (BRO)*



*Brushed Satin Brass (BSB)*

Part No.	Finish	oo	<>	Ø	l->	Box Qty
GIVK045	PN, BRO, BSB	-	-	45	32	25



## Chelsea



Part No.	Finish	oo	< >	∅	l->	Box Qty
GCHK038	BSB, PN	-	30	38	30	10



*Brushed Satin Brass (BSB)*



*Domed*

*Polished Nickel (PN)*

## Kew



Part No.	Finish	oo	< >	∅	l->	Box Qty
GKEK038	BSB, PN	-	30	38	30	10



*Brushed Satin Brass (BSB)*

*Flat*



*Polished Nickel (PN)*

## Portobello



Part No.	Finish	oo	< >	∅	l->	Box Qty
GPOK038	BSB, PN	-	30	38	30	10



*Brushed Satin Brass (BSB)*

*Concave*



*Polished Nickel (PN)*

Elegant, yet modest.

An enduring classic that is wonderfully versatile, fabulous in a contemporary space yet equally as desirable in a traditional setting.

Sophisticated by definition, never failing to impress.



Find us on instagram  
for more inspiration

 momohandlesuk



Chrome Plated (CP)

Matt Black (MBL)



Brushed Nickel (BN)



Chrome Plated (CP)



Satin Brass (SB)



## Verity



Part No.	Finish	oo	<>	Ø	l->	Box Qty
GVEK042	CP	-	40	40	40	30

## Evora



Part No.	Finish	oo	<>	Ø	l->	Box Qty
GEVK024	MBL, CP, BN, SB	-	-	24	29	25



Brushed Nickel (BN)



Polished Nickel (PN)

## Isla



Part No.	Finish	oo	<>	Ø	l->	Box Qty
GISK035	BN	-	-	35	22	25

## Hugo



Part No.	Finish	oo	<>	Ø	l->	Box Qty
GHUK038	PN	8	-	38	36	25



## Handleless Profiles

*J Profile*  
*C Profile*  
*D Profile*  
*E Profile*

*Accessories  
and Fixtures*

# Handleless Profiles



J02



J01



C02



C01

## J Profile

Part No.	Finish	Length	Box Qty
G10-J01/2	Silver, Anthracite	4m	10

## C Profile

Part No.	Finish	Length	Box Qty
G10-C01/2	Silver, Anthracite	4m	6



E04



E03



D04



D03

## E Profile

Part No.	Finish	Length	Box Qty
G10-E03/4	Silver, Anthracite	2.5m	4

## D Profile

Part No.	Finish	Length	Box Qty
G10-D03/4	Silver, Anthracite	2.5m	4

# Accessories and Fixtures



1.



2.



3.



4.



5.



6.



7.



8.



9.



10.



11.



12.

Part No.	Ref.	Type	Finish	Box Qty
G10-T01/02	1.	T Profile	Silver, Anthracite	6
G11-J07/08	2.	End Caps - J	Silver, Anthracite	1
G11-C01/02	5.	Internal Corner - C	Silver, Anthracite	1
G11-J01/02	6.	Internal Corner - J	Silver, Anthracite	1
G11-002	9.	Plastic Fixing Clip (2)	Colour may vary	300
G11-003	10.	Vertical Spacer Block	Black - Plastic	1

Part No.	Ref.	Type	Finish	Box Qty
G11-C07/C08	3.	End Caps - C	Silver, Anthracite	1
G11-C03	4.	Int. & Ext. Corner - C	Silver - Plastic	1
G11-J04/05	7.	External Corner - J	Silver, Anthracite	1
G11-C04/05	8.	External Corner - C	Silver, Anthracite	1
G11-001	11.	Metal Fixing Clip	Steel	50
G11-J03	12.	Int. & Ext. Corner - J	Silver - Plastic	1



momohandles

[momohandles.co.uk](http://momohandles.co.uk)

momohandles